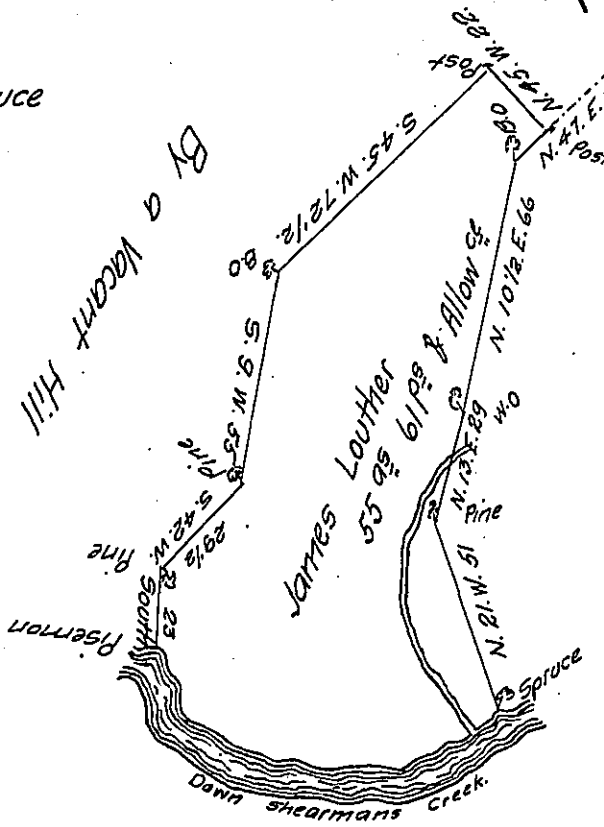


Courses & Distances Down the  
Creek from the Pisemon.  
S. 26. E. 14 1/2  
S. 57. E. 24  
N. 88. E. 38  
N. 63 1/2 E. 25. to the Spruce



Pg. 168

Thomas Simly  
D-5 -243

The Draught of a Tract of Land Situate in Tyrone Township Cumberland  
County Containing Fifty five Acres and 61 Perches and Allowance of Six P Cent  
for Roads &c<sup>o</sup> Surveyed December 25<sup>th</sup> 1794 in pursuance of a Warrant granted  
to James Loutler Dated February 8<sup>th</sup> 1793.

Ps Sam<sup>l</sup> Lyon D.S.

To Daniel Brodhead Esquire  
Surveyor General of Pennsylvania }

IN TESTIMONY that the above is a copy of the original remaining on file in  
the Department of Internal Affairs of Pennsylvania, made  
conformably to an Act of Assembly approved the 16th day of  
February, 1833, I have hereunto set my Hand and caused  
the Seal of said Department to be affixed at Harrisburg,  
this thirtieth day of September 1905

*Loac R Brown*  
Secretary of Internal Affairs.